



simply  
sleep  
well

**Optimo**  
Schlafsysteme

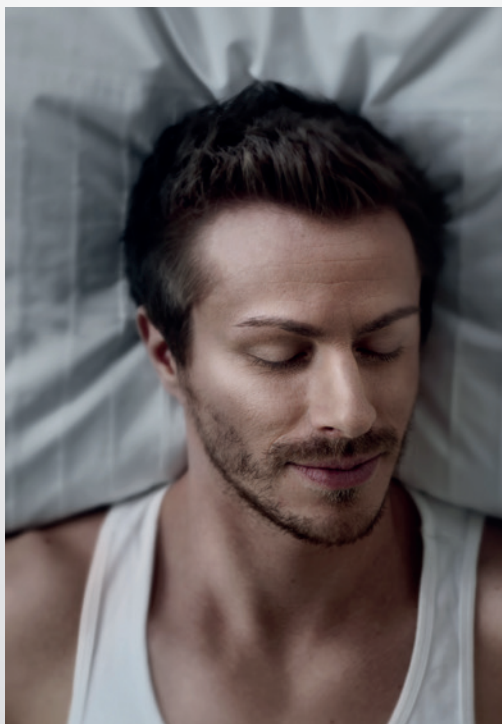
The basics  
for the optimum  
product

Optimo product line



As diverse as the  
needs of our customers:

Optimo's  
product range



# Austria's No.1 for dreamy sleep quality

With Optimo, you are putting your faith in perfectly coordinated sleeping systems "Made in Austria".

Good sleep shouldn't be a science. At least not for Optimo's customers. Because Optimo knows that at the end of a long day, all you want is to "simply sleep well".

## **Quality "Made in Austria" – Competence and experience since 1954**

Optimo Schlafsysteme GmbH in Braunau am Inn/Upper Austria is among Austria's leading manufacturers of complete systems, and is the only manufacturer of slatted frames and mattress support systems with its production facilities in Austria. Founded in 1954, the core competence for ergonomically correct, healthy reclining comfort has gradually been expanded over the years.

Today, Optimo Sleeping Systems is one of the leading manufacturers of innovative sleeping systems in Austria.

Optimo's sleeping systems are based on a total of 60 years of experience, innovation and the latest findings in ergonomics and sleep research. We rely on the scientific know-how of leading competence centres such as the EIM Ergonomics

Institute in Munich, the Sleep Medicine Research Centre in Regensburg and many others.

## **Tailored to your sleeping position – clearly presented**

The Optimo product portfolio covers a broad spectrum, but in line with the company's philosophy, "simply sleep well", it offers a clear guide to help you choose the right sleeping system. The use of high-quality raw materials, ergonomically optimised design and fine-tuning for different zones forms the basis for long-lasting regeneration.

**Find your optimum  
sleeping system on the  
following pages!**

More valuable tips on selecting the right mattress are available at [www.optimo.at/schlafkonfigurator](http://www.optimo.at/schlafkonfigurator). Find the optimum sleeping system in five simple steps!

## Mattress Impulsa R 500

- The open-pored, 7-zone cold foam with active breathing qualities ensures perfect pressure relief thanks to its high point elasticity.
- The open cell structure guarantees pleasant aeration.
- The cube cut design perfectly conforms to your body in the head, shoulder, waist and pelvic areas and provides optimum support.
- The raindrop-shaped cuts promote the aeration of the mattress and create the conditions for an ideal sleep climate.
- Cover: breathable double layer made of skin-friendly, quality Tencel natural fibres



## Mattress Gloria E 500

- The open-pored, high-quality EMC cold foam with active breathing qualities ensures precise pressure relief.
- The especially adaptable SMT surface section design provides ergonomic reclining comfort and ideal support.
- The high density guarantees consistent, long-term reclining comfort.
- The special cross-section structures also provide an optimum flow of air to promote a comfortable sleep climate.
- Cover: breathable double layer made of skin-friendly, quality Tencel natural fibres



## Slatted Frame Kompakt

- 28 movable female connectors with double caps provide excellent adjustment to the body.
- Frame made of high-quality wood with multi-layer lamination for increased stability
- 5 x pelvic comfort zones, individually adjustable



### Kompakt KF

- Manually adjustable head and foot section



### Kompakt S

- Not adjustable



### Kompakt EL

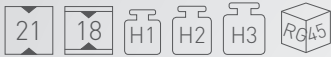
- Electric, continuously adjustable head, back and foot section



## Mattress Florena E 700

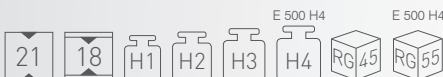
**Optimo**  
Schlafsysteme

- The exclusive 3-layer mattress impresses by conforming perfectly to the body, in combination with its optimum supporting strength.
- Layers consisting of open-pored, 7-zone EMC cold foam with active breathing qualities ensure perfect pressure relief.
- Balanced cutting technology and firm EMC cold foam in the core for ergonomic reclining comfort and additional aeration.
- The cubed structure ensures an optimum fit to the body.
- Cover: breathable double layer made of quality Tencel natural fibres with elasthane functional fibres and circumferential regulating strip



## Mattress Florena E 500

- The open pored, high-quality 7-zone EMC cold foam with active breathing qualities ensures optimum pressure relief and a pleasantly dry sleep climate.
- The 3D cube cut design guarantees ergonomically ideal reclining comfort.
- The transverse channels in the core of the mattress increase the body fit in the sensitive shoulder area.
- The pronounced shoulder, waist and pelvic areas combine the perfect supportive function with optimum pressure relief.
- Cover: breathable double layer made of quality Tencel natural fibres with elasthane functional fibres and circumferential regulating strip



also in  
**H4**  
suitable for  
up to 160 kg



ALSO IN  
FIRMNESS  
RATING 4

## Slatted Frame Ultimo Top

- 28 movable female connectors with double caps that cover the bars provide excellent adjustment to the body and flexible reclining comfort even at the edges.
- Frame made of high-quality wood with multi-layer lamination for increased stability
- 5 x pelvic comfort zones, individually adjustable



### Ultimo Top KF

- Manually adjustable head and foot section

### Ultimo Top S

- Not adjustable



## Slatted frame Eterno XL

- Strengthened beech plywood frame, coated
- Extended eightfold reinforcement of pelvic comfort area adjustable thanks to sliding parts
- For extreme strain up to 160 kg weight
- Permanently elastic cap material made of long-lasting Tactel
- Reclining comfort even at the edges

For extreme  
strain  
up to  
160 kg

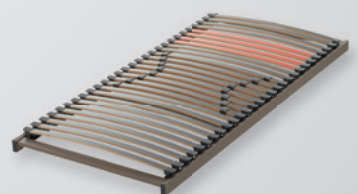


### Eterno XL LKF

- Long, manually adjustable head and foot section
- Medical adjustment setting for reflux in the head area

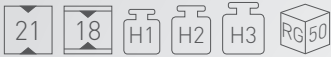
### Eterno XL S

- Not adjustable



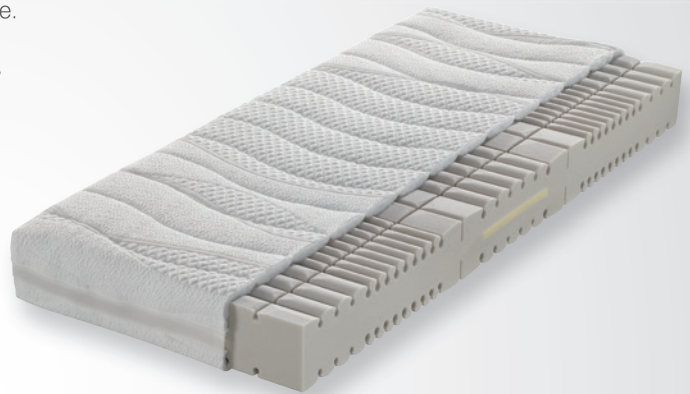
## Mattress Euphora Duo V 500

- The premium multi-layer mattress combines the benefits of two high-quality core materials: viscoelastic foam or cold foam for freely selectable comfort levels.
- The reclining area, made of viscoelastic foam, conforms to the body perfectly.
- The even distribution of weight gives you a sensation of weightlessness.
- The reclining area made of open-pored, 7-zone cold foam with active breathing qualities and balanced cutting technology offers slightly firmer reclining comfort with precise adaptation to contours and optimum aeration.
- Cover: breathable double layer made of quality Tencel natural fibres and circumferential regulating strip



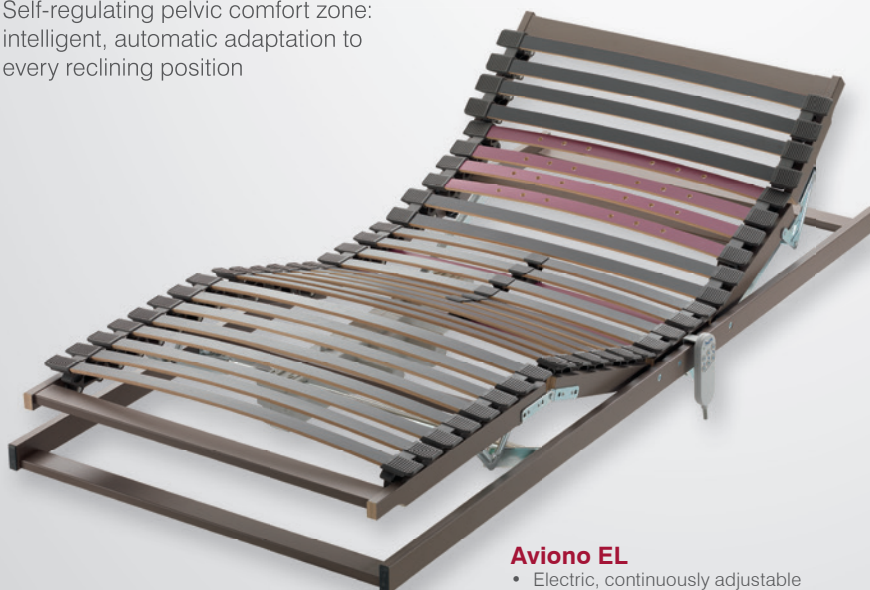
## Mattress Ergosan E 500

- The open pored, high-quality 7-zone EMC cold foam with active breathing qualities ensures precise reclining comfort and a pleasantly dry sleep climate.
- The special 3D cube cut design perfectly conforms to your body.
- The climate-regulating foam integrated into the pelvic zone ensures ergonomically ideal support for the spine and optimum aeration.
- The numerous raindrop-shaped cuts promote the flow of air.
- The high density ensures consistent reclining comfort.
- Cover: breathable double layer made of quality Tencel natural fibres with elasthane functional fibres and circumferential regulating strip



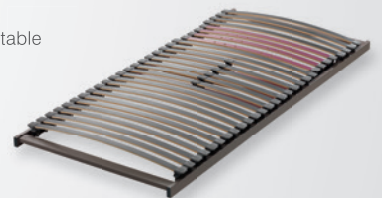
## Slatted Frame Aviono

- 28 movable female connectors with double caps that cover the bars provide excellent adjustment to the body and flexible reclining comfort even at the edges.
- Frame made of high-quality, coated beech wood with multi-layer lamination for increased stability
- Flexible shoulder-sinking mechanism guarantees ergonomically ideal degree of sinking for the shoulders
- Self-regulating pelvic comfort zone: intelligent, automatic adaptation to every reclining position



### Aviono S

- Not adjustable



### Aviono LKF

- Long, manually adjustable head and foot section
- Medical adjustment setting for reflux in the head area



### Aviono Master

- Electric, continuously adjustable back and foot section
- Manually adjustable head section
- Freely hinged foot section



### Aviono EL

- Electric, continuously adjustable head, back and foot section



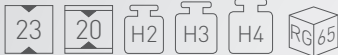
## Mattress Lamona E 700

- This exclusive mattress made of EMC cold foam impresses with its long-lasting comfort, optimum body support and perfect distribution of pressure.
- The exceptionally high density and the perfect combination of elasticity and flexibility guarantee long-lasting restful sleep.
- The SMT cutting technology allows the mattress to fit the body's contours precisely.
- The unique surface structure ensures optimum aeration for a pleasant sleep climate.
- The fine-tuned adjustment in the sensitive shoulder zone is supported by a softer EMC cold foam insert.
- Firmer cold foam in the lumbar region provides perfect ergonomic support.
- Cover: breathable double layer using exclusive border technology, made of quality Tencel natural fibres with elasthane functional fibres

**Optimo**  
Schlafsysteme

H4

suitable for  
up to 160 kg



## Topper Sensual

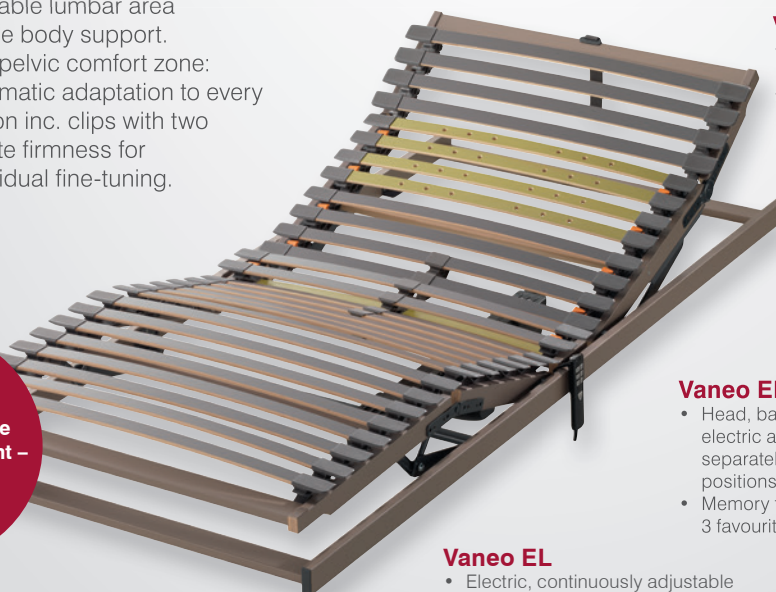
- The open-pored soft cold foam with active breathing qualities conforms precisely to the body, thus guaranteeing not only perfect pressure relief but also the necessary supportive function for the body in the long term.
- The open cell structure provides optimum circulation of air and humidity, thereby ensuring an ideal, hygienic sleep climate.
- Cover: easy-care double layer quilted with breathable climate fibres for a pleasantly dry sleep climate and high levels of hygiene.



## Slatted Frame Vaneo

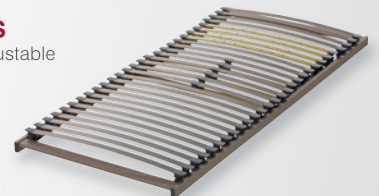
- 28 movable female connectors with permanently elastic Tactel caps that cover the bars provide excellent adjustment to the body and flexible reclining comfort even at the edges.
- Frame made of high-quality, coated beech wood with multi-layer lamination for increased stability.
- Flexible shoulder-sinking mechanism guarantees ergonomically ideal degree of sinking for the shoulders.
- Minutely adjustable lumbar area provides precise body support.
- Self-regulating pelvic comfort zone: intelligent, automatic adaptation to every reclining position inc. clips with two levels to regulate firmness for additional individual fine-tuning.

All comfort versions have the same design height – combine them as you wish.



### Vaneo S

- Not adjustable



### Vaneo LKF

- Long, manually adjustable head and foot section
- Medical adjustment setting for reflux in the head area



### Vaneo EL 4 Funk/Memory

- Head, back, foot and ankle sections have continuous electric adjustment and can be adjusted separately for individual comfort positions (EL 4)
- Memory function – save your 3 favourite positions



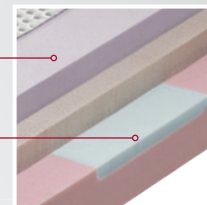
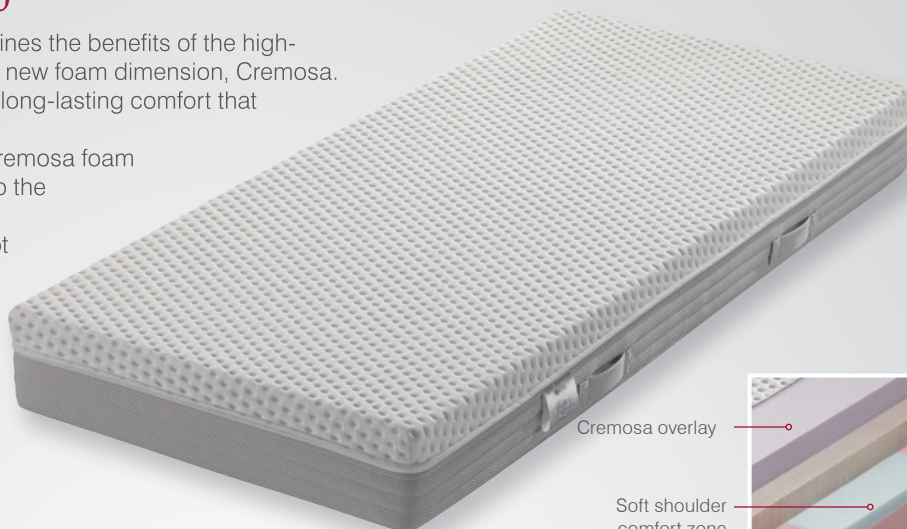
### Vaneo EL

- Electric, continuously adjustable back and foot section
- Manually adjustable head section



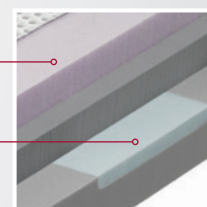
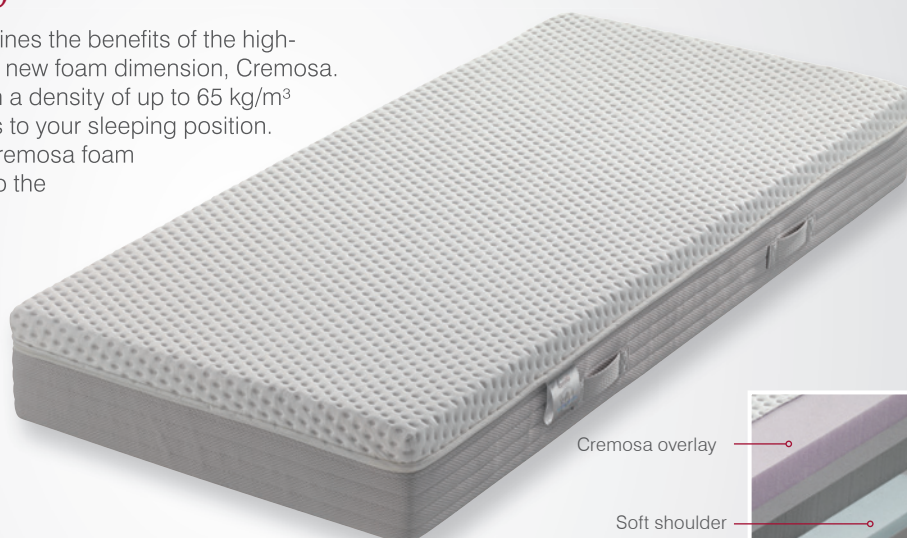
## Mattress Cremosa M 500

- This premium, multi-layer mattress combines the benefits of the high-quality cold foam with the completely new foam dimension, Cremosa.
- The supportive cold foam base provides long-lasting comfort that adapts to your sleeping position.
- Thanks to its soft elastic resilience, the Cremosa foam immediately balances out any changes to the sleeping position.
- Cremosa's sensational snug-feeling is not affected by temperature and gives a feeling of weightlessness along with high pressure relief.
- Cover: innovative KlimaTherm cover with climate zone on the side for high breathability with heavy fabric made of quality Tencel natural fibres



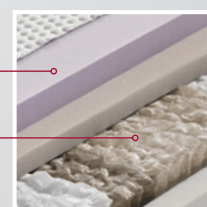
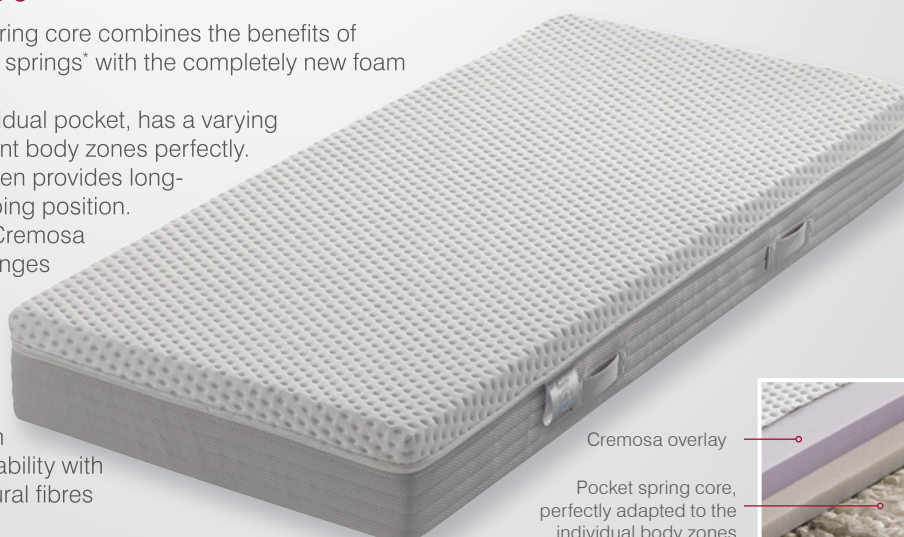
## Mattress Cremosa M 700

- This premium, multi-layer mattress combines the benefits of the high-quality cold foam with the completely new foam dimension, Cremosa.
- The supportive EMC cold foam base with a density of up to 65 kg/m<sup>3</sup> provides long-lasting comfort that adapts to your sleeping position.
- Thanks to its soft elastic resilience, the Cremosa foam immediately balances out any changes to the sleeping position.
- Cremosa's sensational snug-feeling is not affected by temperature and gives a feeling of weightlessness along with high pressure relief.
- Cover: innovative KlimaTherm cover with climate zone on the side for high breathability with heavy fabric made of quality Tencel natural fibres



## Mattress Cremosa TF 700

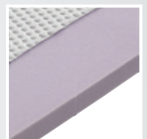
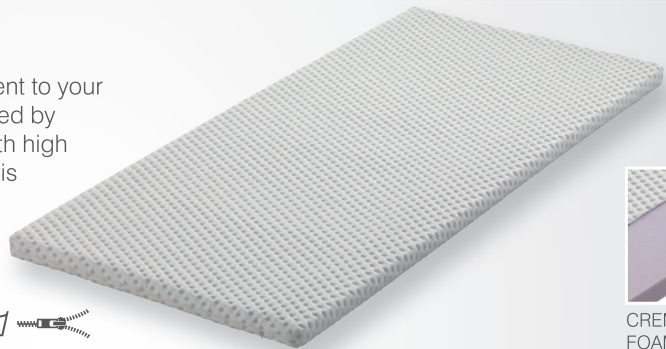
- This premium mattress with a pocket spring core combines the benefits of high-quality cold foam and 1000 pocket springs\* with the completely new foam dimension, Cremosa.
- Each spring, which is sewn into an individual pocket, has a varying spring force so as to adapt to the different body zones perfectly.
- The supportive cold foam layer in between provides long-lasting comfort that adapts to your sleeping position.
- Thanks to its soft elastic resilience, the Cremosa foam immediately balances out any changes to the sleeping position.
- Cremosa's sensational snug-feeling is not affected by temperature and gives a feeling of weightlessness along with high pressure relief.
- Cover: innovative KlimaTherm cover with climate zone on the side for high breathability with heavy fabric made of quality Tencel natural fibres



simply  
sleep  
well

## Topper Cremosa T 550

- This topper made of Cremosa foam is the perfect supplement to your mattress – Cremosa's sensational snug-feeling is not affected by temperature and gives a feeling of weightlessness along with high pressure relief for the sensitive body areas of shoulder, pelvis and heels, thus promoting a well-balanced night's sleep.
- Cover made of high-quality Tencel natural fibres.



CREMOSA  
FOAM



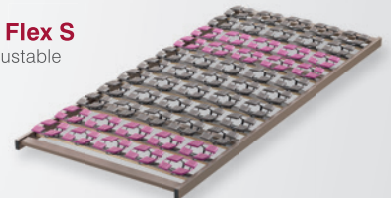
## Mattress Support Aviono Flex

- 55 (60 with the adjustable Master version) highly flexible spring elements made of permanently elastic Tactel material guarantee maximum durability.
- Frame made of high-quality, coated beech wood with multi-layer lamination for increased stability.
- 220 (240 with the adjustable Master version) individual reclining points conform superbly to the body's contours, adapting to the weight load and movement.
- Softer spring elements in the shoulder area offer excellent pressure relief, while firmer spring elements in the lumbar and pelvic regions provide an appropriate supportive effect.
- The arrangement of the spring elements promotes optimum aeration of the mattress for a hygienic, fresh sleep climate.



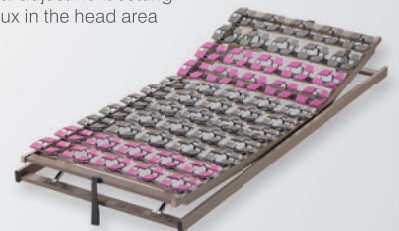
### Aviono Flex S

- Not adjustable



### Aviono Flex LKF

- Long, manually adjustable head and foot section
- Medical adjustment setting for reflux in the head area



### Aviono Flex Master

- Electric, continuously adjustable back and foot section
- Manually adjustable head section
- Freely hinged foot section



### Aviono Flex EL

- Electric, continuously adjustable head, back and foot section

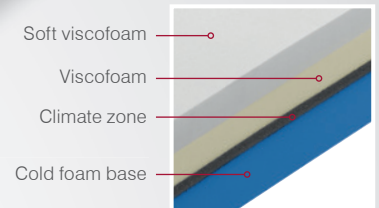


No downward-pointing  
motor parts



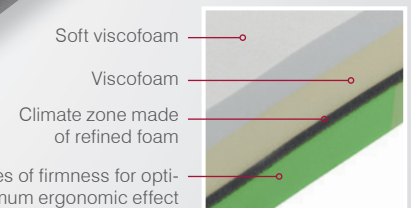
## Mattress Viscotherm V 300

- The multi-layered design combines a breezily light sleeping sensation with excellent support.
- The viscoelastic foam in two intelligent gradations reacts sensitively to body pressure and heat, providing a perfect, unique fit.
- The even distribution of weight gives you a sensation of weightlessness with high pressure relief.
- A newly developed climate zone made of refined foam between the layers regulates humidity levels.
- The open-pored base consisting of 9cm of cold foam creates active support that fits to the body's contours and, in combination with the climate zone on top, ensures perfect aeration of the mattress.
- **Cover:** innovative KlimaTherm cover with climate zone on the side for high breathability with heavy fabric made of quality Tencel natural fibres



## Mattress Viscotherm V 500

- Luxurious multi-zone, multi-layer mattress with two intelligently coordinated layers of viscoelastic foam and an open-pored cold foam base with active breathing qualities in two different levels of firmness.
- The specially processed viscoelastic foam boasts a unique body fit.
- The even distribution of weight across the entire reclining surface gives you a sensation of weightlessness with high pressure relief.
- The open-pored base consisting of 8 cm of cold foam with evenly distributed resistance for an optimum ergonomic effect creates active support that fits the body's contours and, in combination with the climate zone on top, ensures perfect aeration of the mattress.
- **Cover:** innovative KlimaTherm cover with climate zone on the side for high breathability with heavy fabric made of quality Tencel natural fibres

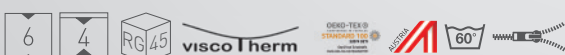


## Topper Memosoft

- The viscoelastic foam reacts sensitively to pressure and body heat by fitting the body's contours precisely.
- This leads to significantly improved positioning of exposed body parts such as the shoulders, back, hips and arms, thus promoting a deeper, more restful night's sleep.
- Easy-care double layer quilted with breathable climate fibres



VISCO  
ELASTIC SOFT  
FOAM



## Mattress Ergomed L 300

**Optimo**  
Schlafsysteme

- The point-elastic, 7-zone latex core with active breathing qualities guarantees pressure relief precisely contoured to the body's shape.
- The highly flexible latex core and special zone incisions in the shoulder, pelvic and foot areas ensure precise, ergonomic reclining comfort.
- The detailed surface incisions help the mattress adapt flexibly, and create a particularly pleasant sleep climate.
- Cover: breathable double layer made of skin-friendly, quality Tencel and linen natural fibres with circumferential regulating strip



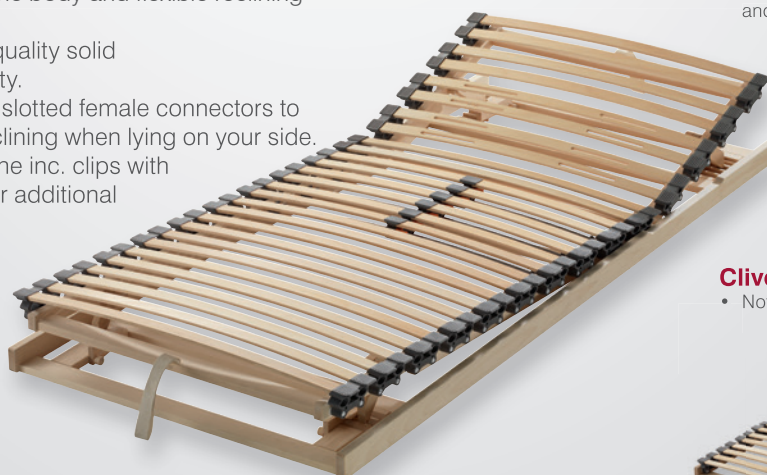
## Mattress Ergomed Natur L 700

- The point-elastic, breathable, 7-zone latex core made of 100% natural latex guarantees pressure relief precisely contoured to the body's shape.
- The particularly open-pored structure of natural latex guarantees perfect temperature regulation.
- Thanks to the high point elasticity of this natural material, the body receives ideal support and relief.
- The special zone distribution in the shoulder, pelvic and foot areas ensures precise, ergonomic reclining comfort.
- The detailed surface incisions ensure flexible adaptation.
- Cover: breathable double layer made of skin-friendly, quality cotton, Tencel and linen natural fibres, generously quilted with Tencel and maize climate fibres; dry cleaning or 30°C gentle cycle recommended



## Slatted Frame Clivo Natur

- 28 movable female connectors with double caps that cover the bars provide excellent adjustment to the body and flexible reclining comfort even at the edges.
- Frame made of untreated, high-quality solid beech wood for increased stability.
- Flexible shoulder zone thanks to slotted female connectors to ensure ergonomically correct reclining when lying on your side.
- Self-regulating pelvic comfort zone inc. clips with two levels to regulate firmness for additional individual fine-tuning.
- The entire slatted frame is completely free of metal for natural sleeping comfort.



### Clivo Natur KF

- Manually adjustable head and foot section

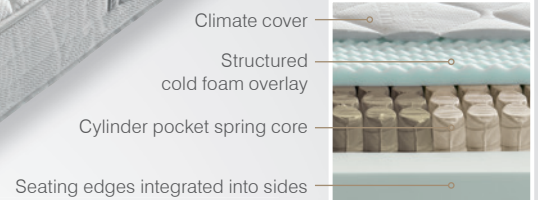
### Clivo Natur S

- Not adjustable



## Mattress Callea C 100

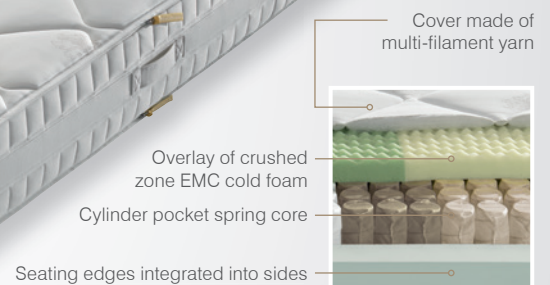
- Pocket spring core mattress with 540\* elastic springs
- Each spring, which is sewn into an individual pocket, has a varying spring force so as to adapt to the different body zones perfectly, thus ensuring that the spine assumes an ergonomically correct position during sleep.
- Open-pored, breathable cold foam overlays with a large number of reclining points guarantee precise pressure relief and an ergonomically correct reclining position.
- Seating edges integrated into the sides to provide stable support when sitting and make getting up easy.
- Cover: breathable double layer using exclusive border technology, made of quality Tencel natural fibres



## Mattress Callea C 300

- Pocket spring core mattress with 540\* elastic springs.
- Each spring, which is sewn into an individual pocket, has a varying spring force so as to adapt to the different body zones perfectly, ensuring your well-being and helping the spine assume an ergonomically correct position during sleep.
- Open-pored, breathable EMC cold foam overlays with evenly distributed resistance for an optimum ergonomic effect and a large number of reclining points guarantee precise pressure relief.
- Cover: hand-stitched, breathable cover made of the finest multi-filament yarn and circumferential regulating border for optimum aeration, zip going around both sides

Zip going around both sides: the upper and lower covers can be taken off individually, which makes handling easier.



## Mattress support Callea B 600

- Mattress support insert with enclosed beech plywood frame guarantees outstanding stability.
- Frame material made of 15 mm-thick plywood for long-lasting, durable reclining surface, with cut-outs for optimum aeration
- Interior cylinder pocket spring core with 430 springs\* with ergonomic zoning
- High-quality, 15 mm comfort foam cover with fleece padding
- Cover: breathable cover made of soft, supple multi-filament yarn
- Optional: mattress holder at the foot

### Callea B 600 EL 2

- Electric, continuously adjustable back and foot section

### Callea B 600 S

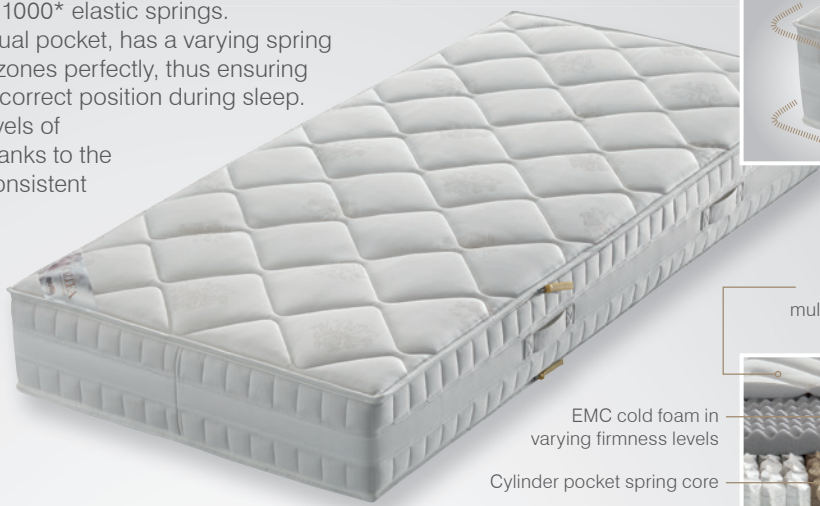
- Not adjustable



## Mattress Callea C 500

Zip going around both sides: the upper and lower covers can be taken off individually, which makes handling easier.

- Opulent pocket spring core mattress with 1000\* elastic springs.
- Each spring, which is sewn into an individual pocket, has a varying spring force so as to adapt to the different body zones perfectly, thus ensuring that the spine assumes an ergonomically correct position during sleep.
- Open-pored EMC cold foam in varying levels of firmness provides perfect support, and thanks to the high density, guarantees many years of consistent reclining comfort.
- EMC cold foam overlays ensure perfect adaptation to the body.
- Cover: hand-stitched, breathable cover made of the finest multi-filament yarn and circumferential regulating border for optimum aeration, zip going around both sides.



Cover made of multi-filament yarn



EMC cold foam in varying firmness levels  
Cylinder pocket spring core

Seating edges integrated into sides



## Mattress Callea C 700

Zip going around both sides: the upper and lower covers can be taken off individually, which makes handling easier.

- Opulent pocket spring core mattress with 1000\* elastic springs.
- Each spring, which is sewn into an individual pocket, has a varying spring force so as to adapt to the different body zones perfectly, thus ensuring that the spine assumes an ergonomically correct position during sleep.
- Open-pored EMC cold foam in varying levels of firmness provides perfect support, and thanks to the high density, guarantees many years of consistent reclining comfort.
- The finely structured surface design of the EMC cold foam overlay ensures perfect adaptation to the body.
- Seating edges integrated into the side to provide stable support when sitting and make getting up easy.
- Cover: hand-stitched cover made of smooth viscose drill weave fabric, generously quilted with breathable climate fibres using exclusive border technology, zip going around both sides.



Cover made of viscose drill weave fabric



Overlay of crushed zone EMC cold foam in varying firmness levels  
Cylinder pocket spring core in varying firmness levels

Seating edges integrated into sides



## Topper Callea T 550

- The core, made of elaborately finished Vita Talalay latex, consists of 100% natural latex.
- The open cell structure provides optimum circulation of air and humidity, thereby ensuring an ideal, hygienic sleep climate.
- Cover: hand-stitched, breathable cover made of the finest multi-filament yarn, washable at 60 °C.



The Velcro strap with handles allows you to join the topper to the mattress, preventing it from slipping.



## Topper Callea T 750

- The core, made of elaborately finished Vita Talalay latex, consists of 100% natural latex.
- The open cell structure provides optimum circulation of air and humidity, thereby ensuring an ideal, hygienic sleep climate.
- Cover: hand-stitched cover made of smooth viscose drill weave fabric, cleanable.



The Velcro strap with handles allows you to join the topper to the mattress, preventing it from slipping.



## Mattress Dorma

- The robust Bonnell spring core, equipped with permanently elastic upholstery overlays made of reliable, high-quality foam and a one-sided, stable cover of natural horsehair climate fleece ensures pleasant reclining comfort.
- Natural ventilation channels combined with breathable materials ensure a pleasantly dry sleep climate.
- Cover: high-quality viscose fabric, permanently attached with especially skin-friendly, comfortable touch.



## Mattress Global Regular

- The overlays made of open-pored, 7-zone comfort foam ensure precise pressure relief and – thanks to the special wave profile – relaxed reclining comfort.
- The pocket spring core also has various comfort zones that provide perfect, ergonomic support for the body when reclined.
- Seating edges integrated into the sides provide stable support and make getting up easier.
- Natural ventilation channels combined with breathable materials ensure a particularly pleasant sleep climate.
- Cover: breathable double layer made of skin-friendly, quality Tencel and linen natural fibres with circumferential regulating strip



## Mattress Junior

- The open-pored, breathable cold foam offers not only high point elasticity, but also the necessary supportive function for good reclining comfort.
- In addition, the high permeability to air provides a pleasantly dry sleep climate.
- Cover: breathable double layer made of skin-friendly, quality Tencel natural fibres.



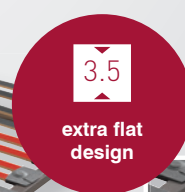
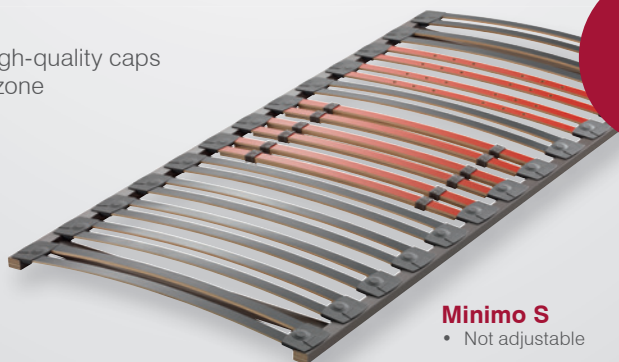
## Mattress Junior Med

- The high-quality, open-pored cold foam guarantees the all-important supportive function thanks to permanent elasticity.
- The one-sided, convoluted soft foam overlay ensures point-elastic pressure relief on the reclining surface.
- Integrated ventilation channels reduce the risk of babies and small children rebreathing.
- Cover: breathable double layer made of skin-friendly, quality Tencel natural fibres.



## Slatted Frame Minimo

- Beech plywood frame, coated
- 26 female connectors embedded in high-quality caps
- Individually adjustable pelvic comfort zone
- **Flat frame design**
- Overall height of just 3.5 cm



### Minimo S

- Not adjustable

## Mattress Epos N 100

- The open-pored, 7-zone comfort foam guarantees precise pressure relief.
- The open cell structure guarantees a high permeability to air, thus providing a pleasantly dry sleep climate.
- Special incisions in the shoulder, pelvic and foot areas offer ergonomic reclining comfort and also support the circulation of air.
- Cover: easy-care double layer quilted with breathable climate fibres

**Optimo**  
Schlafsysteme



## Mattress Impulsa R 300

- The open-pored, 7-zone cold foam with active breathing qualities ensures perfect pressure relief – and therefore also the necessary support for the spine – thanks to its high point elasticity.
- The open cell structure guarantees optimum aeration for a pleasantly dry sleep climate.
- Delicate incisions in the sensitive shoulder area allow the body to gently sink in correctly when lying on your side.
- The special wave profile offers additional, relaxing reclining comfort and increases permeability to air.
- Cover: easy-care double layer quilted with breathable climate fibres



## Slatted Frame Stabil

- Frame made of high-quality wood with multi-layer lamination for increased stability
- 14 or 18 female connectors firmly embedded in plastic caps in the frame\*\*
- Individually adjustable pelvic comfort zone\*
- 2 cross struts, solid wood (25 x 20 mm) screwed into the frame laterally

\*exceptionally stable

\*\*with Stabil version: 14 connectors  
Female connectors



### Stabil S

- Not adjustable



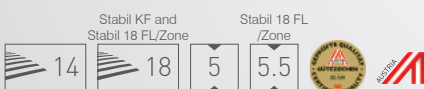
### Stabil 18 FL/Zone

- Not adjustable



### Stabil KF

- Manually adjustable head and foot section



## Topper Flexibel

- The open-pored comfort foam ensures precise pressure relief.
- The open cell structure provides optimum circulation of air and humidity, thereby ensuring an ideal, hygienic sleep climate.
- Cover: easy-care double layer quilted with breathable climate fibres for a pleasantly dry sleep climate and perfect hygiene



COMFORT  
FOAM



## Pillow Vitania



- The elastic soft comfort foam ensures ergonomic positioning of the spine. The special shape gently supports the neck and fits the head's contours.
- Two different heights enable you to choose a reclining position that is optimally suited to your shoulder width.
- Cover: skin-friendly, smooth double layer, unquilted. The viscose fibres guarantee a dry, hygienic sleep climate.



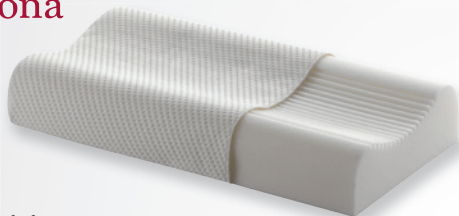
## Pillow Viscona



- The viscoelastic soft foam ensures good conformity to the contours of the head and reduces pressure in the sensitive neck area, while the shape provides gentle support.
- Delicate incisions in the core surface reduce the fabric tension and promote fine-tuned adjustment.
- Cover: skin-friendly, smooth double layer, unquilted. The viscose fibres guarantee a dry, hygienic sleep climate.



## Pillow Viscona soft



- The viscoelastic soft foam ensures good conformity to the contours of the head and reduces pressure in the sensitive neck area, while the shape provides gentle support.
- Two different heights enable you to choose a reclining position that is optimally suited to your shoulder width.
- Delicate incisions in the core surface reduce the fabric tension and promote fine-tuned adjustment.
- Cover: skin-friendly, smooth double layer, unquilted. The viscose fibres guarantee a dry, hygienic sleep climate.



## Pillow Variofit pure



- The elastic soft cold foam ensures ergonomic positioning of the spine. The special shape gently supports the neck and fits the head's contours.
- Two different heights enable you to choose a reclining position that is optimally suited to your shoulder width.
- Delicate incisions in the core surface reduce the fabric tension and promote comfort.
- The two loose insert pads enable you to individually adjust the height and support.
- Cover: breathable double layer made of quality Tencel natural fibres, unquilted



## Pillow Variofit visco



- The visco elastic soft foam ensures good conformity to the contours of the head and reduces pressure in the sensitive neck area.
- Two different heights enable you to choose a reclining position that is optimally suited to your shoulder width.
- Delicate incisions in the core surface reduce the fabric tension and promote comfort.
- The two loose insert pads enable you to individually adjust the height and support.
- Cover: breathable double layer made of quality Tencel natural fibres



## Pillow Variofit talalay



- The soft elastic Talalay latex stands out thanks to its optimum sleep climate, conforms well to contours and reduces the pressure on the sensitive neck area.
- Two different heights enable you to choose a reclining position that is optimally suited to your shoulder width.
- Delicate incisions in the core surface reduce the fabric tension and promote fine-tuned adjustment.
- The two loose insert pads enable you to individually adjust the height and support.
- Cover: breathable double layer made of quality Tencel natural fibres

